



eTo11 - WT-178 Wireless Tester

eTo inc.,

5F-3, NO.242 ,Meicun Rd.,
West District ,Taichung City,
403 Taiwan, R. O. C.

Tel: 886-4-852-9443
Fax: 886-4-853-6475

Website: www.etotek.com.tw

Feature

eTo11 Wireless Tester, WT-178, is a PDA tester in scanning, analyzing and optimizing 2.4 / 5 GHz Wireless Local Area Networks. The WT-178 measures 4.9-5.9 GHz / 2.4-2.5GHz which operate on the IEEE 802.11a/b/g/n standard allowing the user to determine the AP's MAC address、SSID、Data Encryption and RSSI signal levels for locating and optimizing access points of WLANs. WT-178 802.11a/b/g/n system uses custom receiver software and the exclusive industry PDA hardware platform to provide the user reliable and precise test data. WT-178 is the best auxiliary tool when building a wireless network.

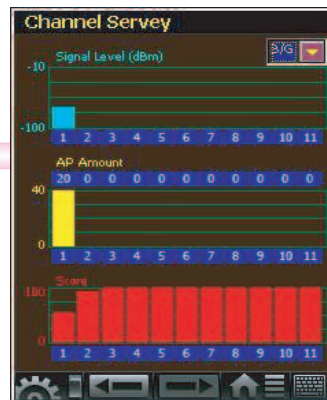


Key Feture & Hardware Spec.

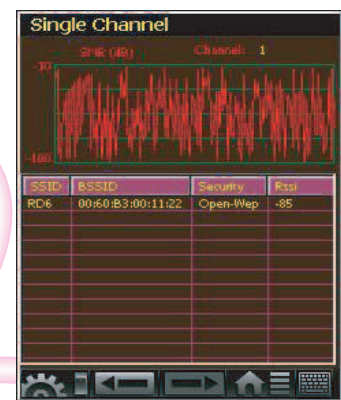
- 2.4 / 5GHz Wireless Network
- Channel Survey
- BSS Survey
- Roaming Test
- Connection Test (Pack Send and Receive, Signal Strength)
- Rogue AP / Rogue Client Detecting
- AP Power Check
- AP Detector
- Test Report

Hardware Spec.

- Intel PXA270 520MHz 32 bits RISC Processor
- 128 MB SDRAM and 128 MB Flash ROM
- One USB port built in
- 240 x 320, 3.5" Color TFT Display
- 1 Numeric Keyboard with LED backlight
- Wolfson WM9705 AC' 97 codec with Touch screen controller
- 3000mAH, 7.4V Li-Ion battery pack
- One rechargeable backup battery
- Dimension 192.5mm (L) x 91.3mm / 78mm (W) x 42.2mm / 60.6mm (H)
- Weight : 560g with Standard Battery Pack
- OS. WinCE. NET5.0 Professional
- Environmental
Operation: -10~50 Degree C
Storage: -20~79 Degree C
- Humidity: Operation- 10%~80%
- IP54Certificated, IP64 compliant
- 1.2m (4ft) drop to concrete certificated
- 1.5m (5ft) drop to concrete, System no broken



Environment Survey

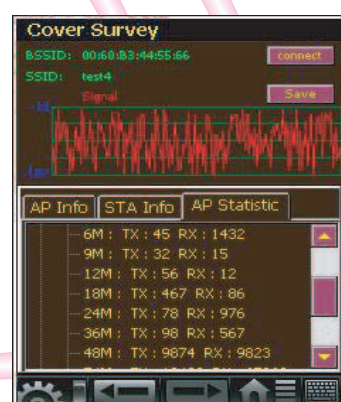


Selected Channel Monitor

BSS Survey

Ch	SSID	BSSID
1	wireless	00:60:B3:22:33:44
2	test3	00:60:B3:33:44:55
3	test4	00:60:B3:44:55:66
4	test5	00:60:B3:55:66:77
5	test6	00:60:B3:66:77:88
6	test7	00:60:B3:77:88:99
7	test8	00:60:B3:88:99:AA
8	test9	00:60:B3:99:AA:BB
9	test0	00:60:B3:AA:BB:CC
10	wireless	00:60:B3:01:02:03
11	wireless	00:60:B3:02:03:04
36	A1	00:60:B3:03:04:05

AP Survey



Selected AP Monitor